



SonoSim-II

Ultrasound Simulator

- Train ultrasound techniques
- Gain diagnostic knowledge
- under realistic conditions with
- real and rare patient pathologies

Sonofit presents the new Simulator **SonoSim-II** dedicated to complete ultrasound simulations. This simulator can model any clinical case of a real sonography examination. Even dynamical examinations (Cardiology) as well as Colour Doppler data can be exercised.

A new puncturing module allows the link between diagnostic simulations and therapy processes.

SonoSim-II utilises a brand new simulation software developed by MedCom GmbH* that allows the parallel multivolume presentation, but also a fusion of several volumes.

As a result, the system is ideal for interdisciplinary examinations – not only for ultrasound, but also for other imaging processes like Bronchoscopy and Endoscopy

Libraries:

- Obstetric /Gynaecology
- Emergency Medicine
- Internal Medicine
- Colour Doppler
- Echocardiography (TTE) and
- Trans Esophageale Echocardiography (TEE)
- Puncture (Therapy Module)
- Urology

SonoSim-II

is prepared for:

- Vascular Examinations
- Endosonography
- PW-Doppler
- Bronchoscopy
- ...and is continuously extended to meet new requirements and applications

Accessories:

UM 10 Dummy female for Ob/Gyn and Puncture

UM 20 Dummy male for Emergency and Internal Medicine, Echocardiography TTE, Puncture

UM 30 Dummy

Probes and Puncture Module:



Standard Probes



Bright Needle



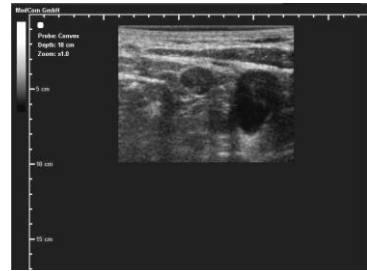
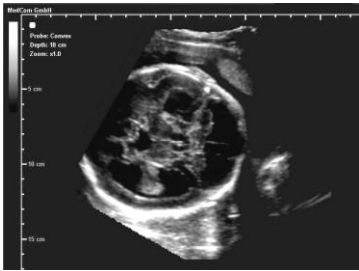
Puncture Module



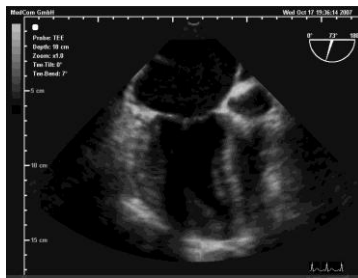
Standard Needle

Library:

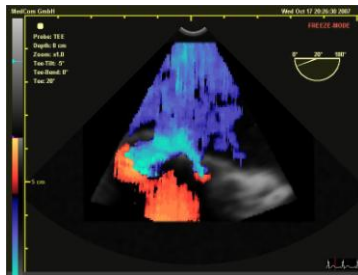
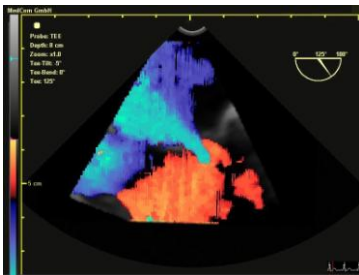
Ob/Gyn



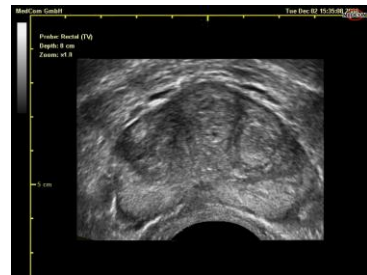
Echocardiography TEE



TEE Colour

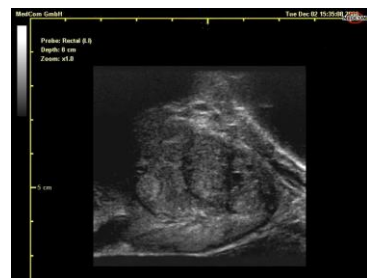


Urology (Prostate)



Rectal: Transversal Scan

Echocardiography TTE



Rectal: Linear Scan

Internal Medicine



Sonofit GmbH

Rundeturmstr.12
D-64283 Darmstadt
phone: +49 (0) 170-18 43 555
fax: +49 (0) 6151-951 47-20